



The world's most intelligent routing system.



RouteSmart for ArcGIS



www.routesmart.com

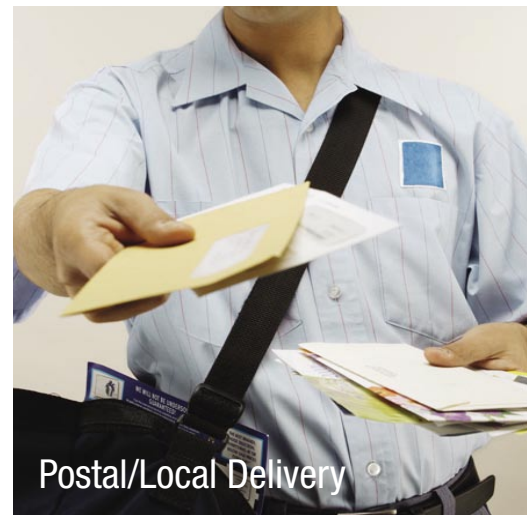
■ RouteSmart for ArcGIS— solving the world's toughest routing problems.

Designed specifically to meet the unique routing demands of the newspaper, postal, public works and utility meter reading industries, RouteSmart for ArcGIS continues to set the standard for GIS-based route-planning solutions. With unique functionality oriented toward solving the demands of our target industries' routing challenges, RouteSmart for ArcGIS provides the power to achieve maximum operational efficiency and return on investment.

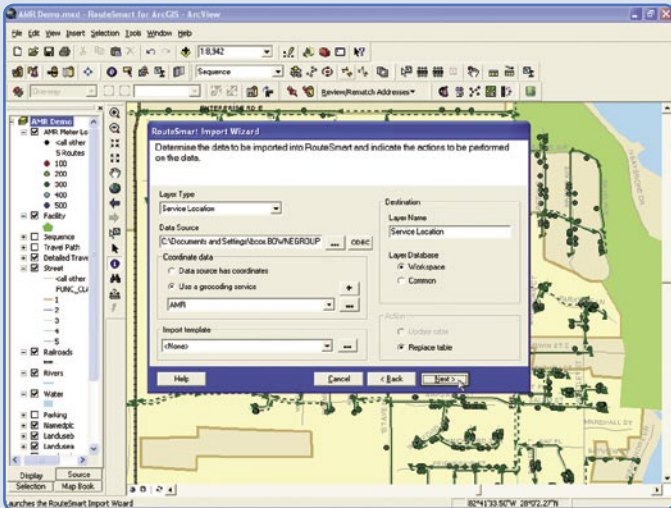
More robust than ever, the RouteSmart for ArcGIS user interface makes it the easiest routing system to deploy, manage and operate. And because it is based on the latest GIS technology from ESRI, your organization will benefit from its enhanced power and flexibility while leveraging existing GIS infrastructure investments.

The RouteSmart Competitive Advantage

- Provides address-specific, side-of-street-level routing and sequencing precision
- Calculates routes explicitly over a street network to factor for real-world service and travel constraints
- Automatically sequences stops in delivery and pick-up order
- Balances routes based on time, number of routes or volume
- Handles high-density residential and low-density commercial service routing
- Factors for mixed-mode routing constraints (e.g. driving, walking, or driving and walking)
- Prints maps and detailed route sheets with computer-generated driving directions



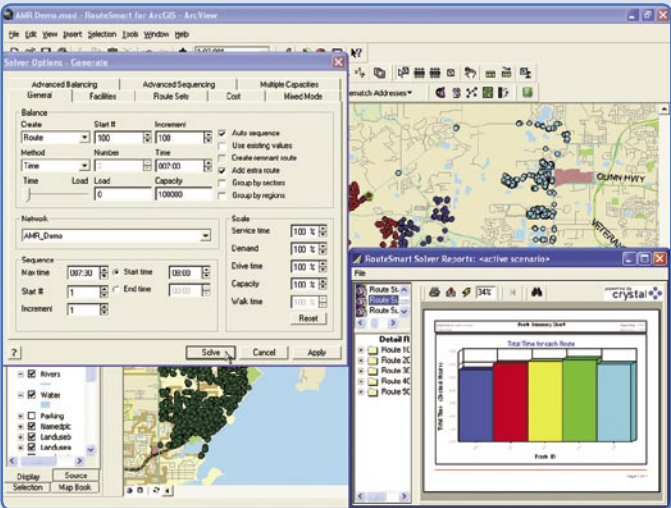
A powerful set of tools for visualizing and evaluating your routing plans



■ Import Wizard

The Import Wizard easily guides you through setting up data for routing.

RouteSmart imports data from Excel, Access, Dbase, ASCII text files or via ODBC connections to establish all required routing layers.



■ Balancing Screen

Balance routes based on time, fixed number of routes or user-defined parameters, such as volume, revenue or load.

RouteSmart creates routes that are geographically compact and balanced around criteria you specify and require.

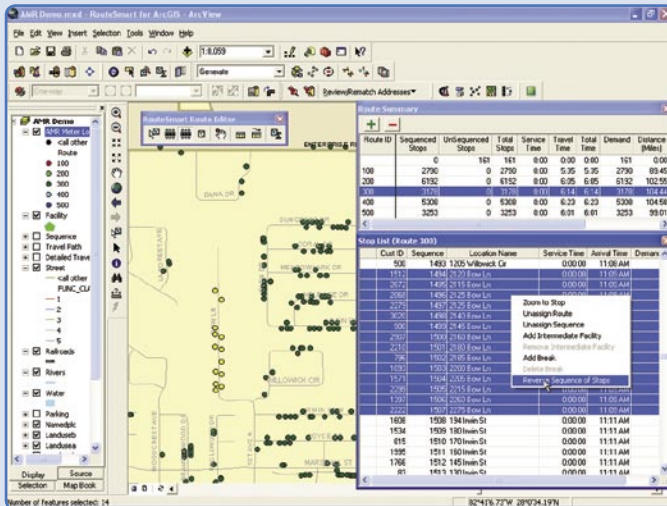
A great product backed by great people

The professionals at RouteSmart Technologies stand behind our product and are with you every step of the way for generating results. From the outset, we'll work closely with you to demonstrate how the unique features and functionality of RouteSmart for ArcGIS can be applied to solve your routing challenges. Using a proven implementation methodology, we'll help you organize all stakeholders to integrate RouteSmart for ArcGIS and provide comprehensive training and support for generating return on investment quickly. Through our annual user conference, online forums and dedicated customer support, RouteSmart Technologies helps you tackle the world's toughest routing problems—yours!

A commitment to delivering success

RouteSmart for ArcGIS represents the culmination of nearly 25 years' experience delivering routing solutions on the ESRI geographic information system platform. The ease of use and flexibility of RouteSmart for ArcGIS—combined with RouteSmart Technologies' continuous investment in R&D enhancements and updates designed specifically to meet the needs of our clients—makes this likely the last routing software you'll buy!

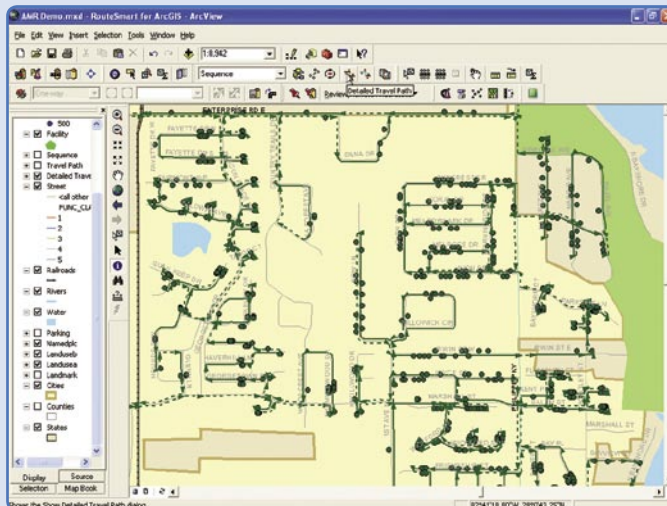
To learn more about how RouteSmart Technologies can deliver success for your organization, contact us today at **800.977.7284**, or visit **www.routesmart.com** to coordinate a demonstration of RouteSmart for ArcGIS using your operations data.



■ **Route Editor**

The Route Editor enables adjustments and “local area knowledge” to be represented in the routing scenario.

RouteSmart provides a rich suite of tools for making adjustments to routes and sequences. Dispatchers and planners can interact with the routing scenarios to fine-tune results for implementation.



■ **Travel Path Precision**

Side-of-street, address-specific calculations at solver run time ensure precision of results.

RouteSmart factors in whether vehicles can approach stops from both sides of the road or are constrained to service from the same or opposite side only.

■ **RouteSmart for ArcGIS** provides a complete routing solution using the world’s leading GIS software from ESRI and premium-quality digital map data from NAVTEQ.



ESRI
Technology
AUTHORIZED
BUSINESS PARTNER

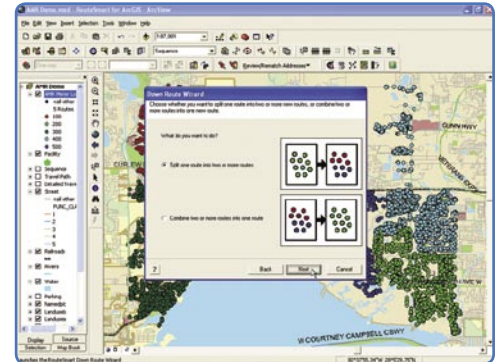


■ Proven success for a range of industries

Newspaper Delivery

The challenge of newspaper home delivery and single-copy route management is to be timely, consistent and accurate—every day, without fail. RouteSmart for ArcGIS meets that challenge by integrating with existing circulation systems to enable both daily routing and routing realignments—all in one software environment.

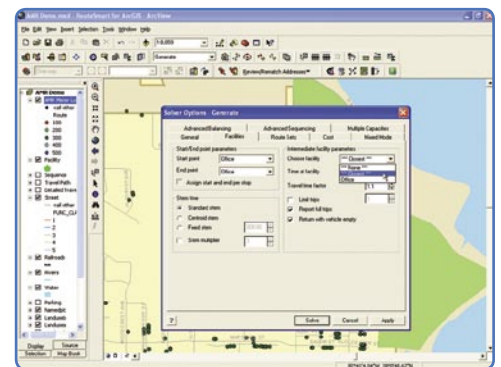
- Combines alternate publications into existing routes
- Reduces carrier subsidies
- Automatically generates turn-by-turn driving directions
- Works with existing circulation systems
- Outputs data for router file updating



Public Works

Your municipality is responsible for high-quality service and operational efficiency every day. RouteSmart for ArcGIS helps you proactively meet these requirements by leveraging both existing GIS data and extensive industry experience to enable routing of multiple services from a single, easy-to-use software solution.

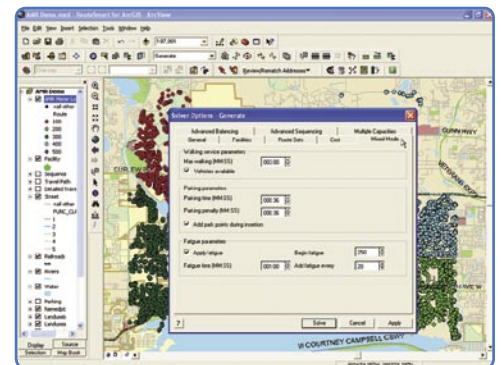
- Solid waste and recycling route collection
- Utility meter reading
- Snowplow territory design
- Street sweeping



Postal/Local Delivery

RouteSmart Technologies has worked successfully to aid leading organizations in both the postal and local delivery industries. Powerful and versatile, RouteSmart for ArcGIS delivers enhanced capabilities that are unmatched by any other routing software package or manual planning technique.

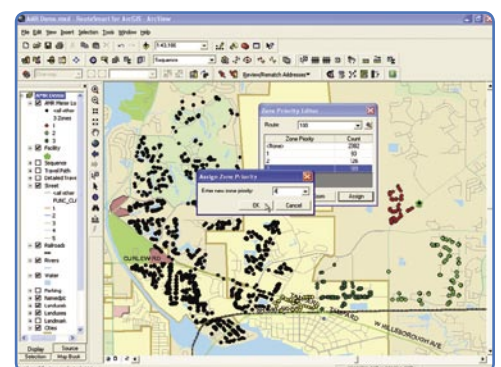
- Work area design
- Daily routing
- Pick-up and delivery with time windows



Utility Meter Reading

Unlike route management systems that rely on “stringing” historical sequences together, RouteSmart for ArcGIS automatically balances meter reading routes and organizes meters in read order. This, along with its extensive list of value-added features, makes RouteSmart for ArcGIS, by far, the most advanced industry tool for utility meter reading.

- AMR route conversion
- Traditional walk/drive mixed-mode routing
- Turn on/turn off and missed-read routing





- **RouteSmart Technologies, Inc.**, is a leading provider of route optimization software and logistics professional services for the newspaper, postal/local delivery, public works and utility meter reading industries. A wholly owned subsidiary of Bowne AE&T Group—an established, Mineola, NY-based provider of architectural, engineering and information technology services for over 100 years—RouteSmart Technologies has worked closely for nearly 25 years with the leading organizations found in these industry segments. Clients include the United States Postal Service, FedEx Home Delivery, Republic Services Group, The New York Times and municipalities such as Charlotte, Philadelphia, San Diego, Fairfax County and Los Angeles.

With headquarters in Columbia, Maryland, and business partners worldwide, RouteSmart Technologies is committed to solving the unique complexities of residential and commercial service-routing problems. The RouteSmart product operates within the ESRI geographic information system product environment. We are an authorized ESRI business partner and focus all RouteSmart product development in this environment.

RouteSmart software computes results with address-specific, side-of-street-level precision and models both driving and walking route planning problems. Workload balancing, territory planning and daily routing are all available in a single integrated product environment that is continuously being enhanced based on customer requirements. Surpassing all other routing systems available in today's marketplace, the RouteSmart product provides the highest degree of accuracy and precision possible for the generation of superior routing results.



The world's most intelligent routing system.

8850 Stanford Boulevard, Suite 3250
Columbia, MD 21045
tel: 800.977.7284 fax: 410.290.0334
www.routesmart.com